



Introduction to the water issues in Slocene river catchment

Linda Fībīga,
08.10.2025.

EU LIFE Programme integrated project

“Implementation of River Basin Management Plans of Latvia towards good surface water status”



- Map of catchment area of the river Slocene in Latvia, key parameters
- Water ecological and chemical quality of the river Slocene at the moment; trends since ...
- Main pressures causing the problem
- Main measures to reduce pressures according to the RBMP.

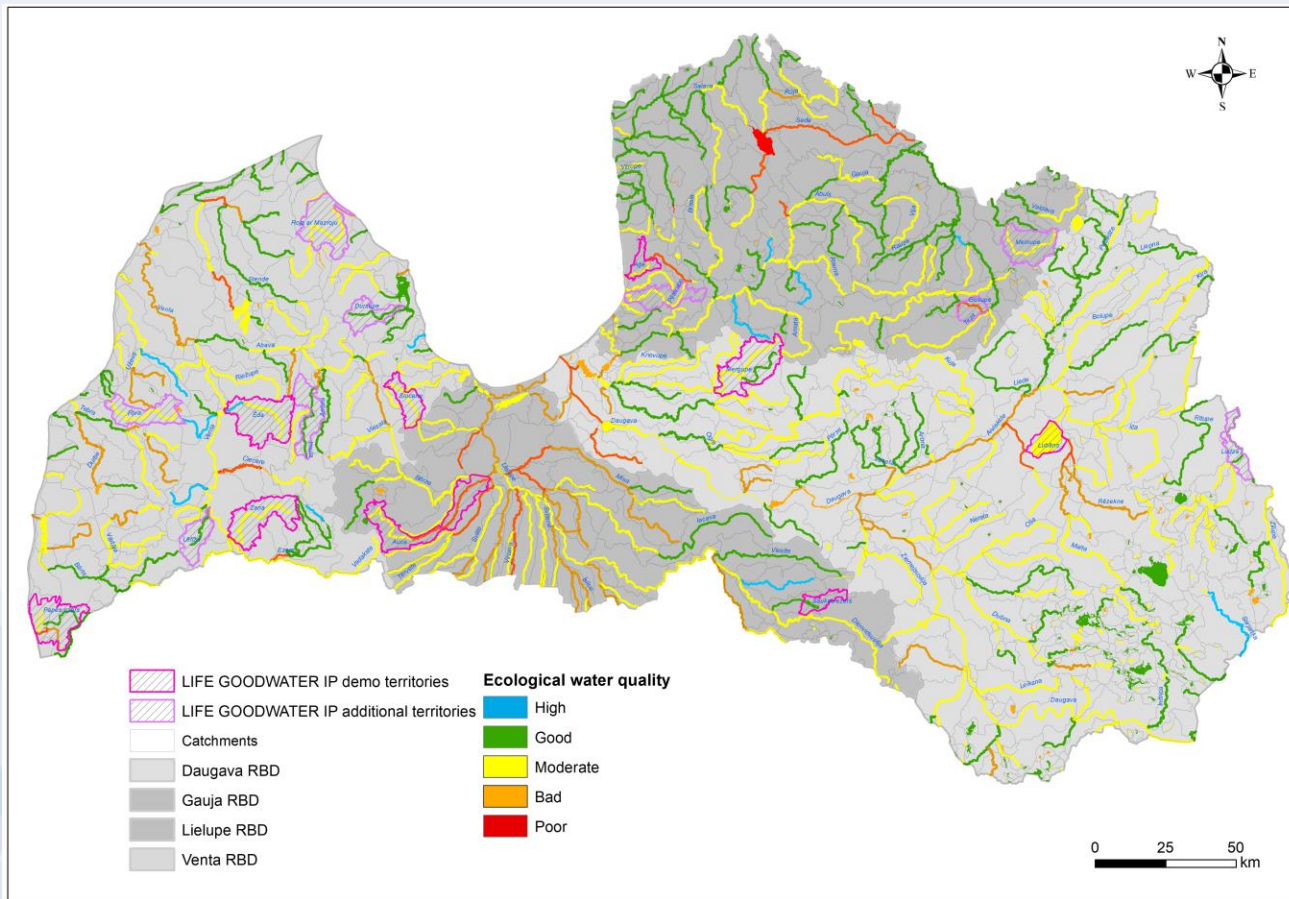
LATVIA

12 400 rivers

2 256 lakes

→ 785 WB (incl.
509 river WB,
276 lake WB)

→ 35% in **good/high**
status



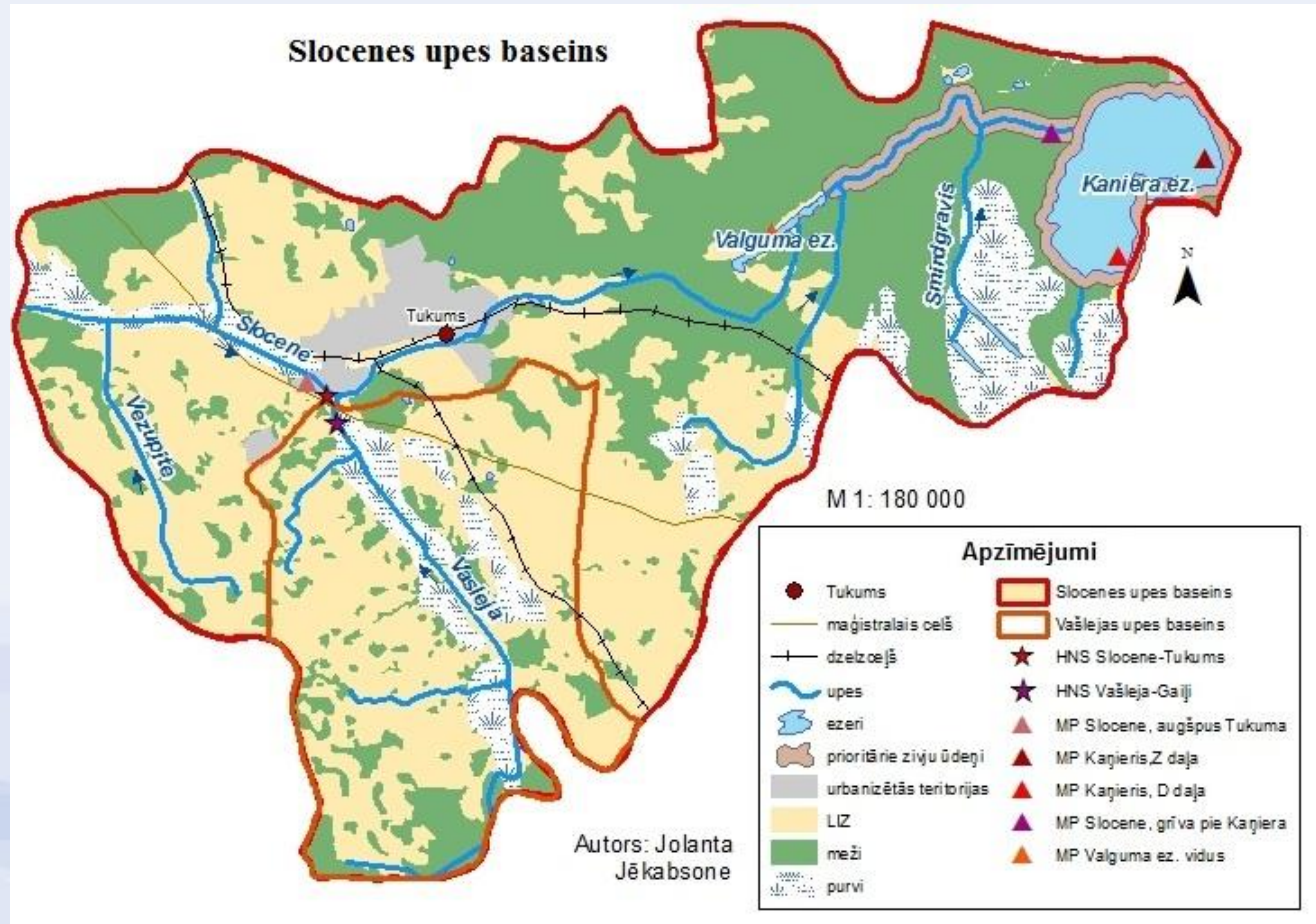
SLOCENE RIVER

12 000 years ago –
the largest river of
Latvia

In 1285 – first
mention in historical
literature sources

Land use (in basin):

- Agri 40%
- Forest 44%
- Bogs&mires 13%



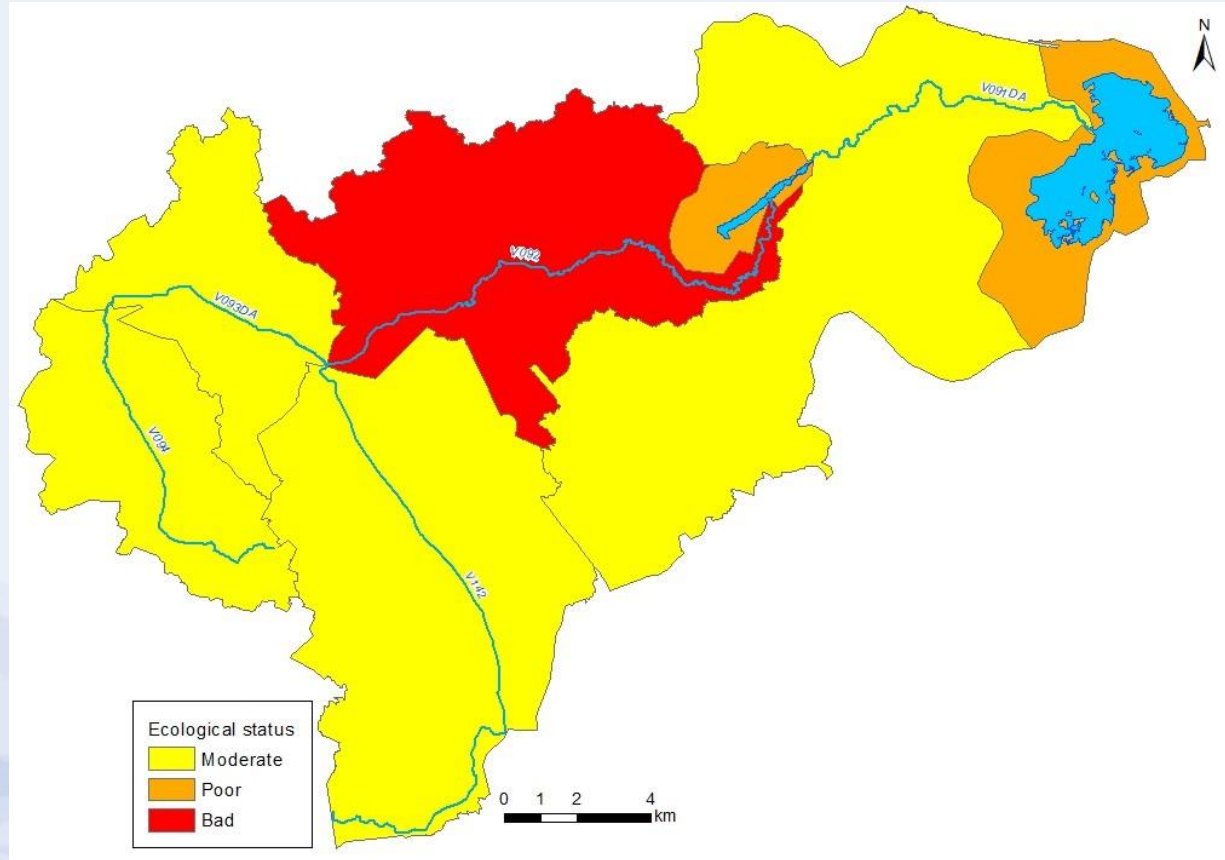
SLOCENE RIVER

Slocene river basin =

- 4 WBs (Slocene)
- 1 WB (Vašleja)
- 2 lake WBs

Main pressures:

- Upstream part:
agriculture, drainage,
wastewaters
- Middle part:
wastewaters (Tukums
city, industry)
- Downstream part:
upstream input



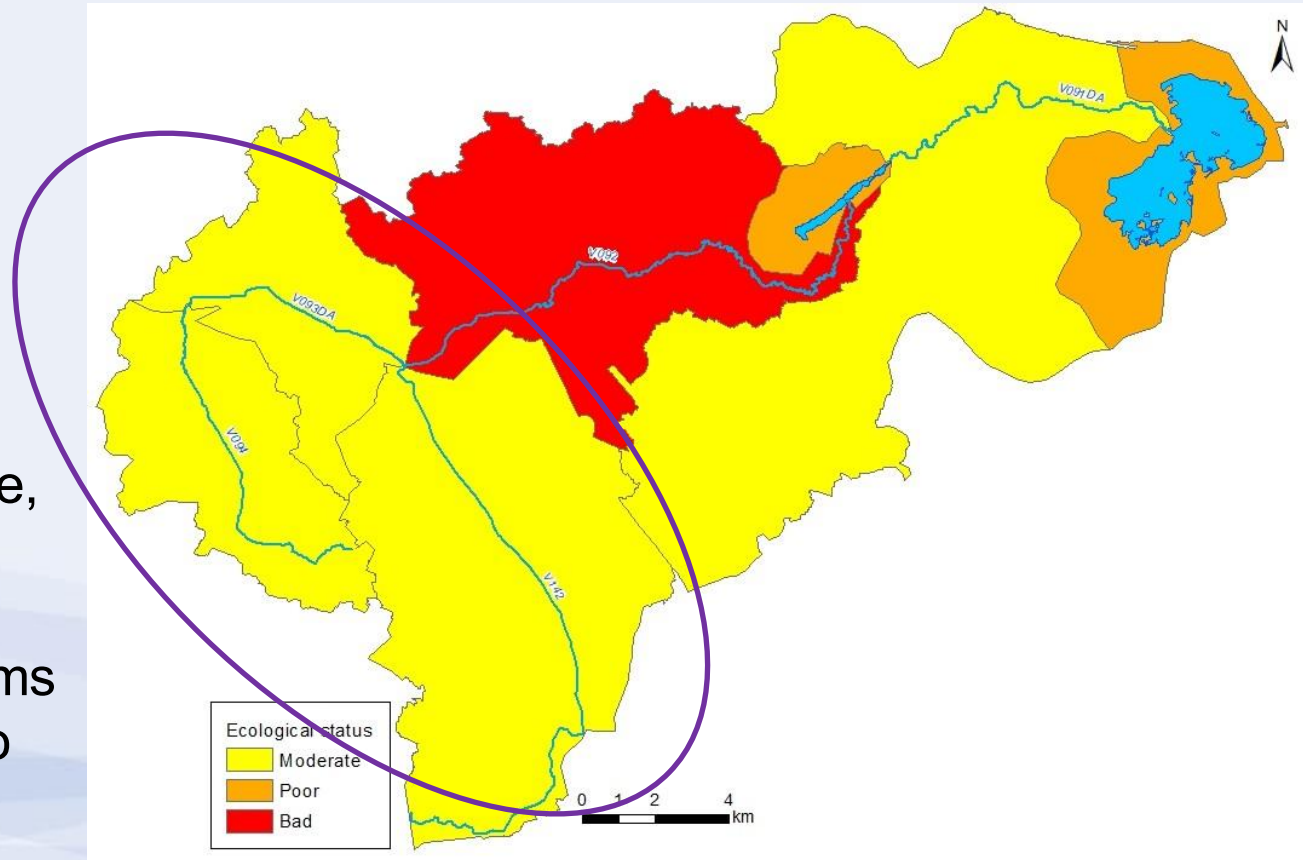
SLOCENE RIVER

Slocene river basin =

- 4 WBs (Slocene)
- 1 WB (Vašleja)
- 2 lake WBs

Main pressures:

- Upstream part:
agriculture, drainage,
wastewaters
- Middle part:
wastewaters (Tukums
city, industry), hymo
- Downstream part:
upstream input



MONITORING IN PROJECT

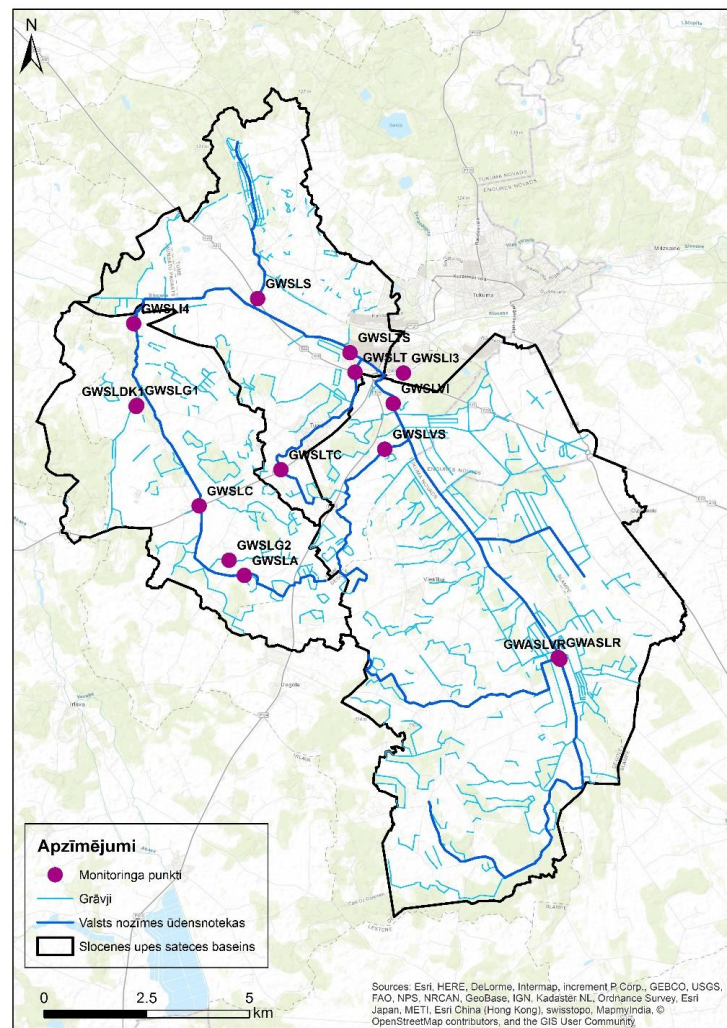
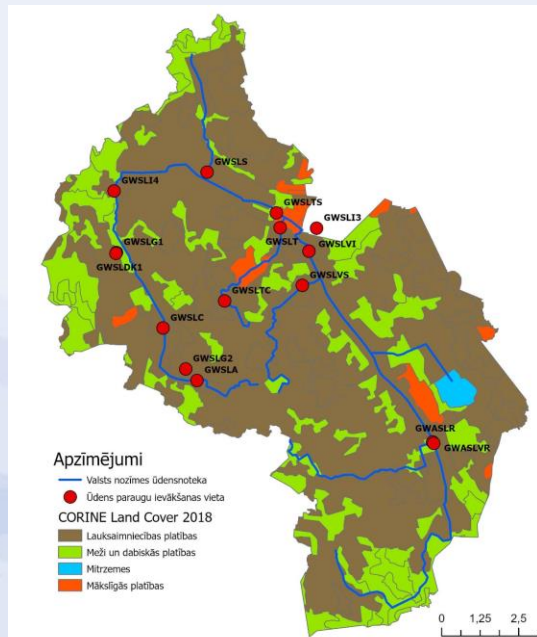
Monitoring sites in LIFE GoodWater IP project

- Agricultural lands >70% (58..97%)

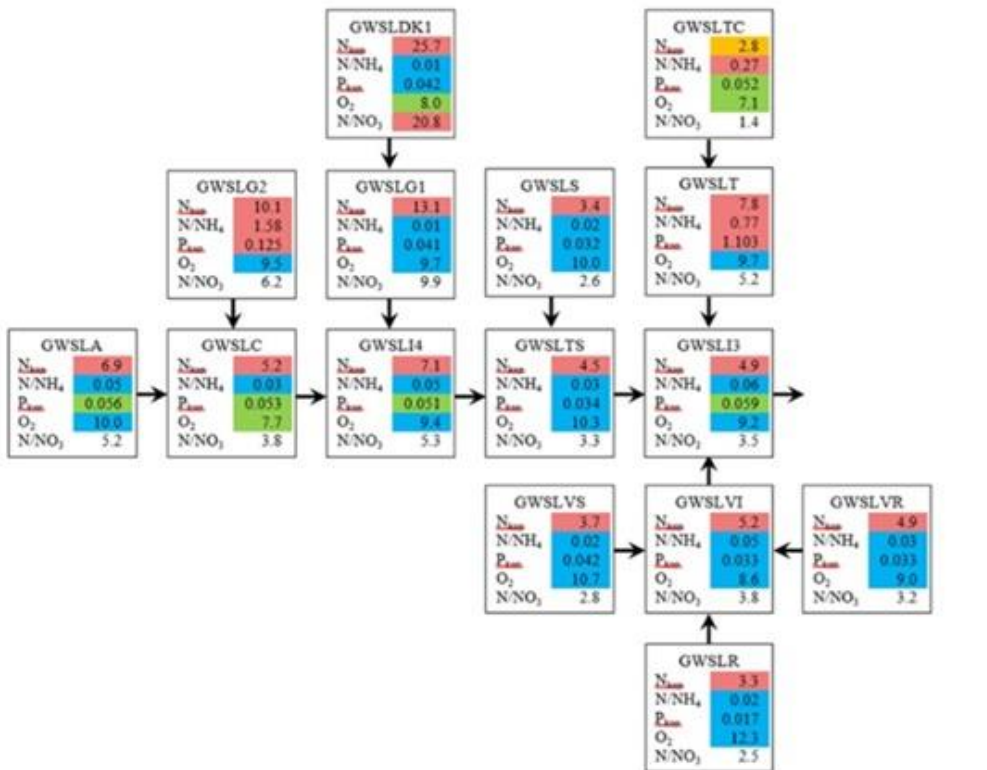
- 15 sampling sites

- 1x month

- Physico-chemical elements, hydrology



Slocene (V094, V093DA, V142)



MEASURES IN RBMP

Upstream part:

- Reduce nutrient pollution from agricultural sector (e.g. bufferzones, sedimentation basins, reduced usage of N fertilizers, etc., incl. LIFE GoodWater IP measures)
- Reduce impact of hydromorphological alterations (e.g. improve lateral connectivity)
- Survey of nutrient pollution sources, control of WWTP

Middle part:

- Reduce impact of hydromorphological alterations (barriers, ecological flow)
- Survey of nutrient pollution sources

MEASURES IN LIFE GOODWATER IP PROJECT

In impacted areas
(agriculture):



Artificial (constructed)
wetlands – on Slocene
river and Vašleja river



Sedimentation basins on
tributaries/ditches

In natural part of Slocene
river:



Clean-up events



Artificial constructed wetland
(Slocene river)

CLEAN-UP EVENTS – BEAVERS!



Thank you! Let the rivers flow!



goodwater.lv



LIFeGoodWaterI
P



LIFeGoodWaterI
P



LIFeGoodWaterI
P



LIFeGoodWaterI
P



LIFeGoodWaterI
P

The integrated project "Implementation of River Basin Management Plans of Latvia towards good surface water status" (LIFE GOODWATER IP, LIFE18 IPE/LV/000014) has received funding from the LIFE Programme of the European Union and the Ministry of Smart Administration and Regional Development Republic of Latvia.
www.goodwater.lv

The information reflects only the LIFE GOODWATER IP project beneficiaries' view and the European Commission's Climate Infrastructure and Environment Executive Agency (CINEA) is not responsible for any use that may be made of the information contained therein.

